

HEES Enterprises, Inc.

P.O. Box 1110 Astoria, OR 97103

(503) 325-8778

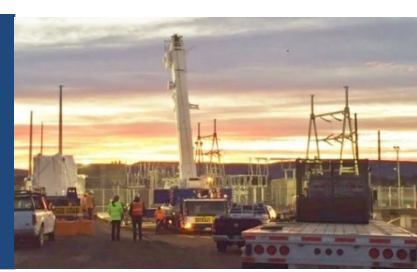
Hees@HeesEnterprises.com

www.heesenterprises.com

ALASKA

Fergus Loughran

Fergus@heesenterprises.com



AWG

AAC & AAAC, ACSR, Overhead/Underground 600 Multiplex Cable, TRXLPE & EPR Primary Cable, Bare Copper, Guy Wire, Control Cable



Carte

Submersible, Subway, Network, & Specialty Transformers



Cleaveland/Price

15-500 kV Air Break Switches & Motor Operators



Columbia Manufacturing

Polyethylene Secondary Pedestals & Pole Line Hardware



Condux

Underground Rodding & Pulling Equipment, Tools & Accessories



Delta Star

10-190 MVA Substation Power Transformers & Mobile Substations



ERMCO

1Ø & 3Ø Pole & Padmount Distribution Transformers, 1.5-2500 kVA



Galvan

Ground Rods, Clamps, Couplings



Harger

Grounding Materials, Ultraweld Exothermic Connectors & Lightning Protection



Klute Steel Inc.

Substation steel fabrication including dead end structures, static masts, equipment stands & bus supports.



Myers Power Products

15-38kV Substation Circuit Breakers



Pfiffner

Instrument Transformers (25kV - 550kV), CTs, VTs, PTs, CCVTs, Resistive Capacitive Voltage Dividers & Combined Instrument Transformers.



Polaris Connectors

Uninsulated & insulated mechanical connectors for distribution transformers and secondary pedestals.



Power Design Inc

Fiberglass Sectionalizing Pedestals, Padmount Switchgear, Buildings & Enclosures



PUI

Fiberglass Crossarms, Crossarm Braces & Deadends



SEFCOR

Substation Bus Fittings



SFPOC

Optical Static Ground Wire-OPGW



SMIT

Large Power Transformers, Phase Shifters & Reactors



Transdata

Digital RMS Energy Meters, Relays & Transducers



Trojan Dryout Systems

Online Transformer Analysis & Dry-Out Systems