

# HEES Enterprises, Inc.

P.O. Box 1110 • Astoria, OR 97103

(503) 325-8778 • FAX (503) 325-2467

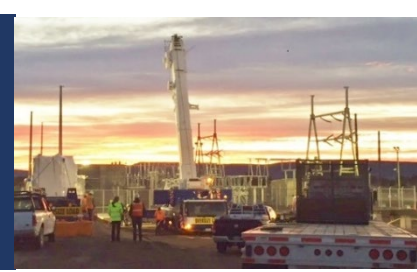
hees@heesenterprises.com

www.heesenterprises.com

## ALASKA

Fergus Loughran

fergus@heesenterprises.com



### AWG

AAC & AAAC, ACSR, Overhead/Underground 600 Multiplex Cable, TRXLPE & EPR Primary Cable, Bare Copper, Guy Wire, Control Cable



### Klute Steel Inc.

Substation steel fabrication including dead end structures, static masts, equipment stands & bus supports.



### Brametal

Steel Lattice Structures



### Myers Power Products

15-38kV Substation Circuit Breakers



### Carte

Submersible, Subway, Network, & Specialty Transformers



### Newell-PSN

Porcelain Line & Station Post Insulators



### Cleveland/Price

15-500 kV Air Break Switches & Motor Operators



### Power Design Inc

Fiberglass Sectionalizing Pedestals, Padmount Switchgear, Buildings & Enclosures



### Columbia Manufacturing

Polyethylene Secondary Pedestals & Pole Line Hardware



### PUPI

Fiberglass Crossarms, Crossarm Braces & Deadends



### Condux

Underground Rodding & Pulling Equipment, Tools & Accessories



### SEFCOR

Substation Bus Fittings



### Delta Star

10-190 MVA Substation Power Transformers & Mobile Substations



### SFPOC

Optical Static Ground Wire-OPGW



### ERMCO

1Ø & 3Ø Pole & Padmount Distribution Transformers, 1.5-2500 kVA



### SMIT

Large Power Transformers, Phase Shifters & Reactors



### Galvan

Ground Rods, Clamps, Couplings



### Transdata

Digital RMS Energy Meters, Relays & Transducers



### Harger

Grounding Materials, Ultraweld Exothermic Connectors & Lightning Protection



### Trojan Dryout Systems

Online Transformer Analysis & Dry-Out Systems